

# Customer Requirements

**Erwin Rusitschka**

Project Manager  
Arvika- TP5.1

**Siemens Nuclear Power**

**Dr. Gerald Weisz**

Arvika  
System Integration

**Siemens ZT-PP4**



DS  
Technologic  
Dörries,  
Dörmp + Bein  
Scharmann



HÜLLER HILLE GMBH  
DIEDESHEIM HESSAPP

DAIMLERCHRYSLER

SIEMENS



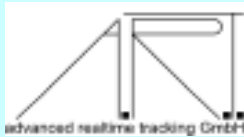
GÜHRING

INDEX



EX-CELL-O

*Mensch-Technik Interaktion in  
der Wissensgesellschaft*



Augmented Reality für Entwicklung,  
Produktion und Service



## Arvika Software Architecture: basic components

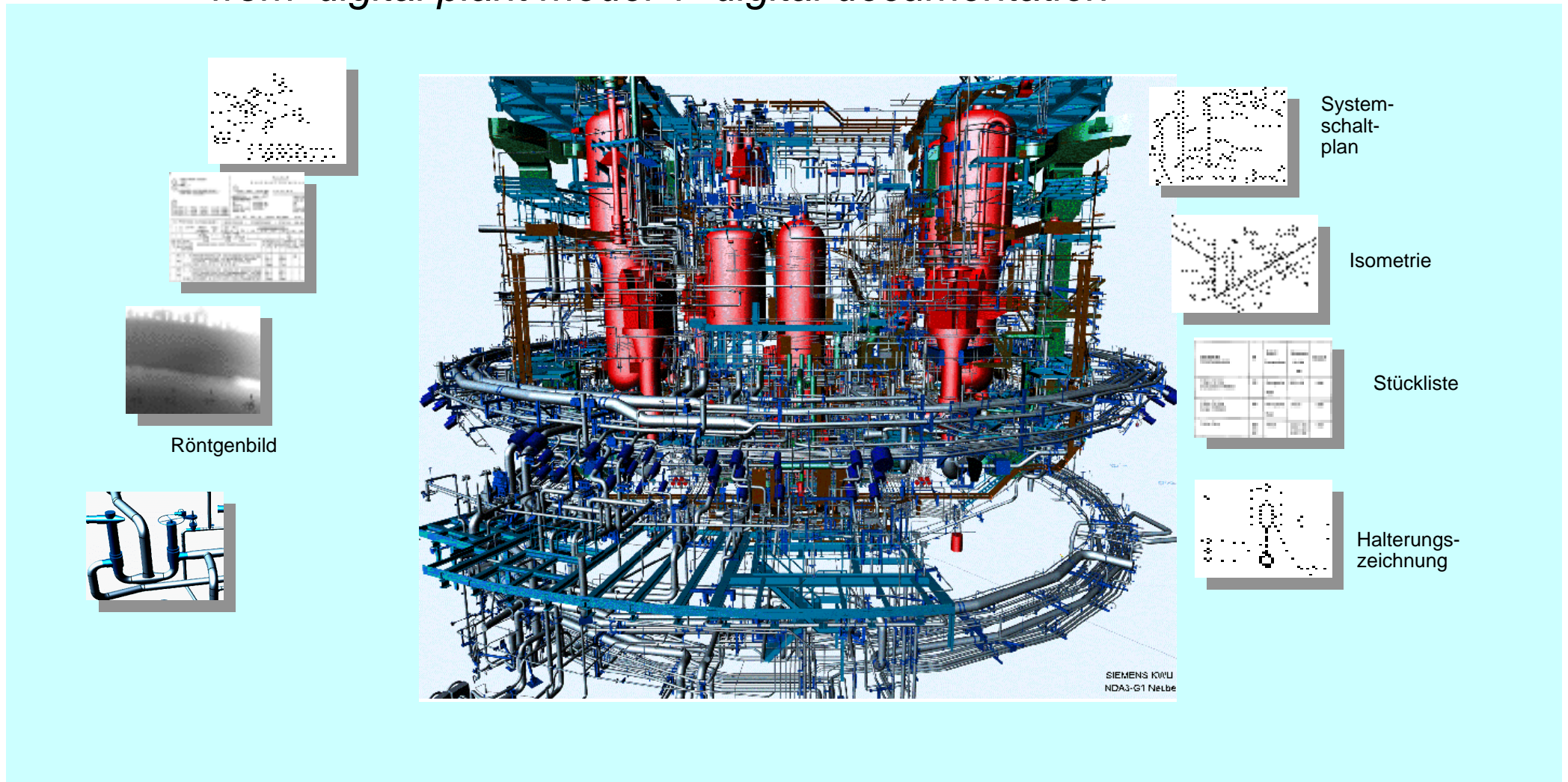
Basic Component	Responsability
AR Browser	IGD + VRCOM/VRCC/ZGDV
AR Editor	IGD + VRCOM
Remote Experte	WZL
<b>InfoService</b>	<b>TUM</b>
InfoBroker	WZL+ S-A&D
WorkflowEngine	TUM
WorkflowEditor	S-A&D
Repräsentationsfreier Dialog	S-ZT IK 5 + WZL *)
Kontext	ZGDV
Sprachanbindung	S-ZT IK5
Protokollierung	S-A&D *)
Konfigurationseditor	S-A&D
Integrationstest	S-ZT PP4
Widget Set	
Tracking F&E	IGD



STARS

## Different levels of documentation available:

from *digital plant model + digital documentation*

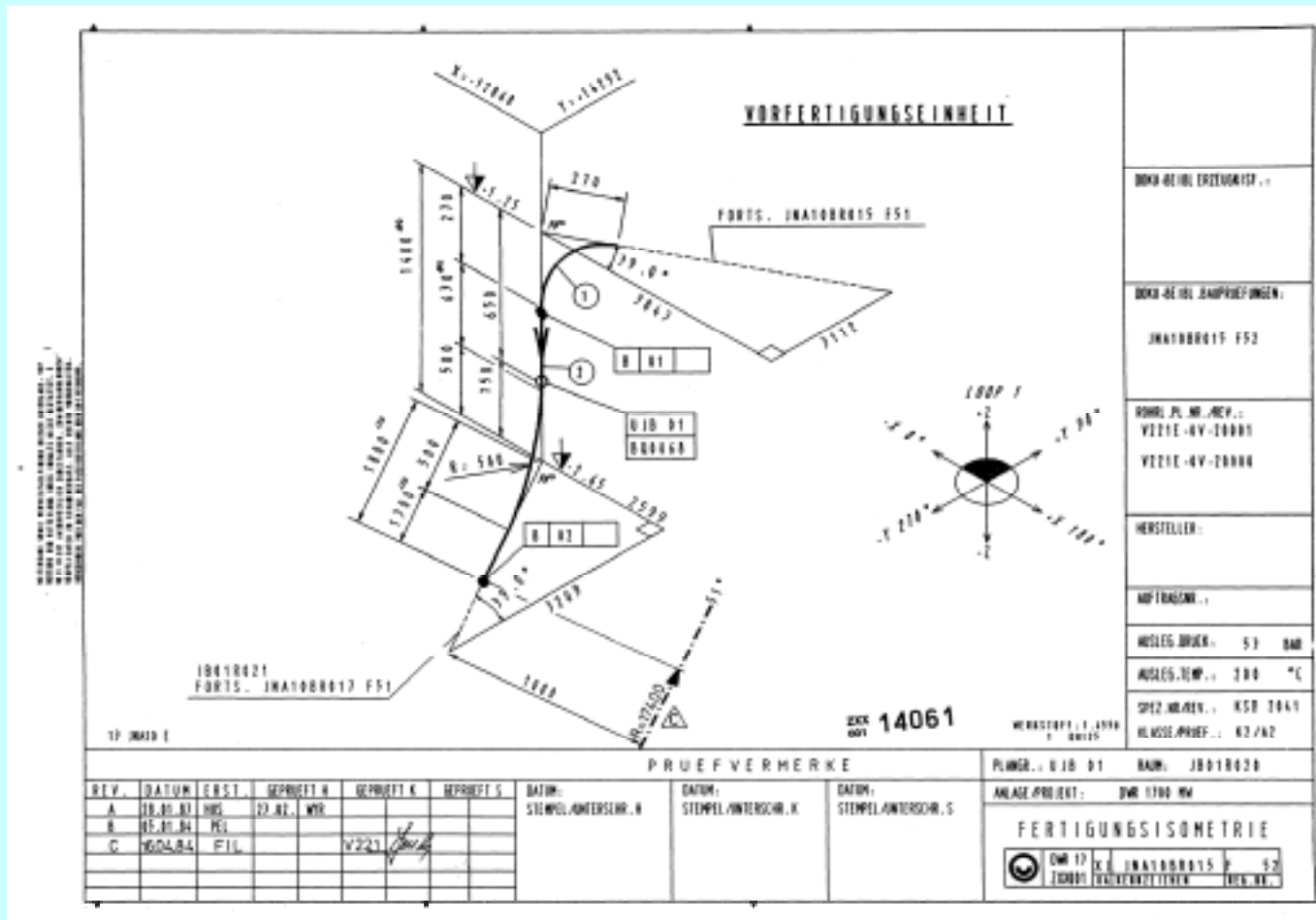


S

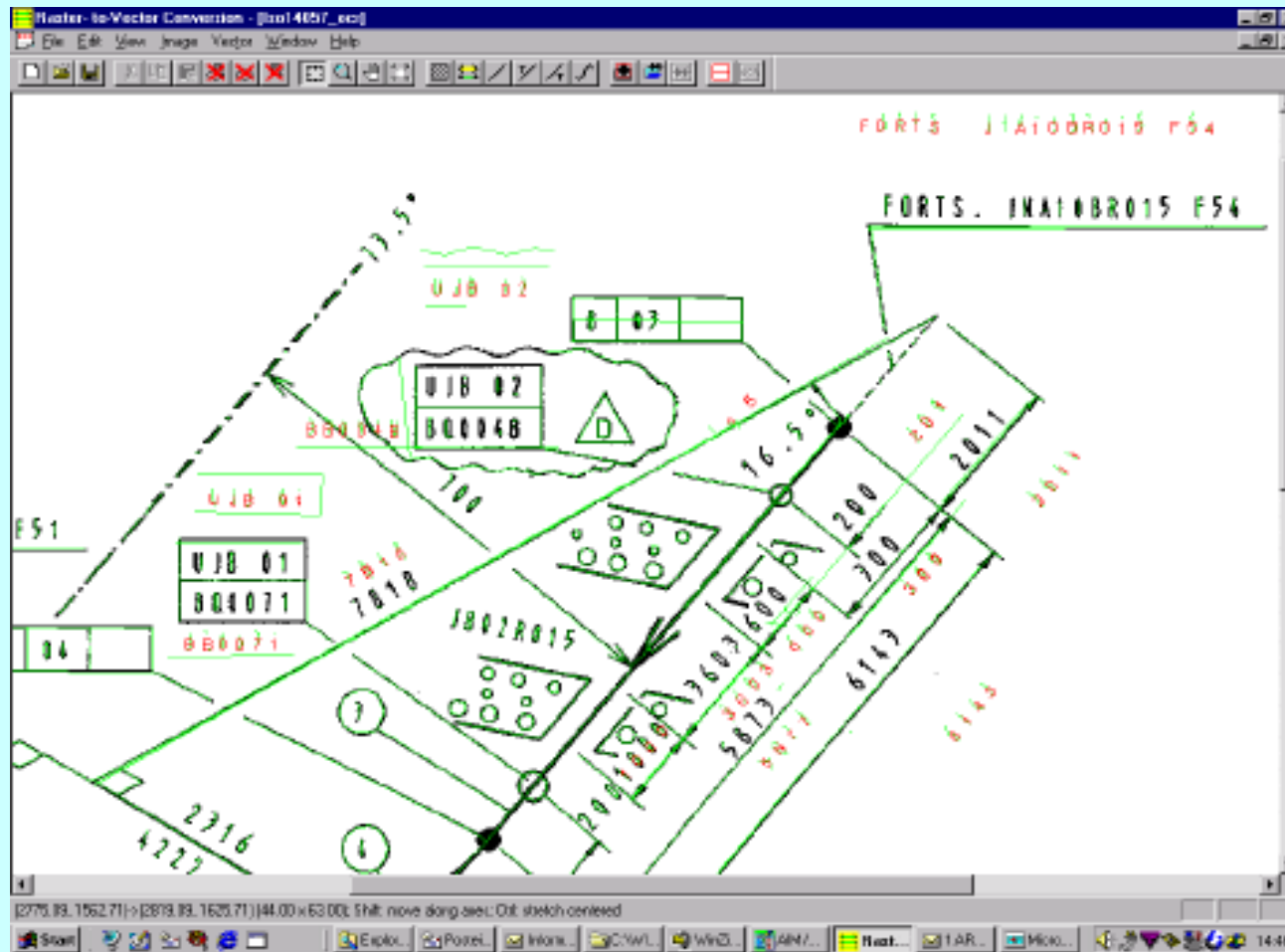


... to

*paper based documentation*



OCR .... Technologies may help partially !

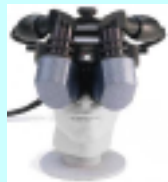


## Display-Technologies



### Hand-held

LCD-Panel, Laptop- oder PDA-Display  
transmissiv, getrackt, touch-sensitiv  
transmissiv, getrackt, touch-sensitiv



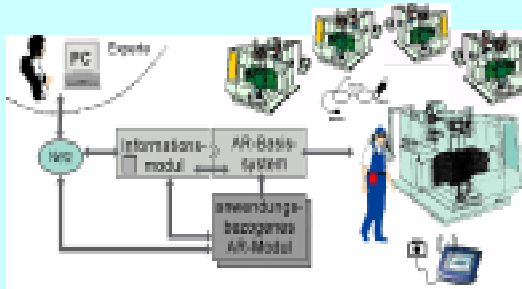
### Head-Mounted

see-through, video-feed-through  
CRT, LCD



## Functional Requirements

Area: Service / Maintenance



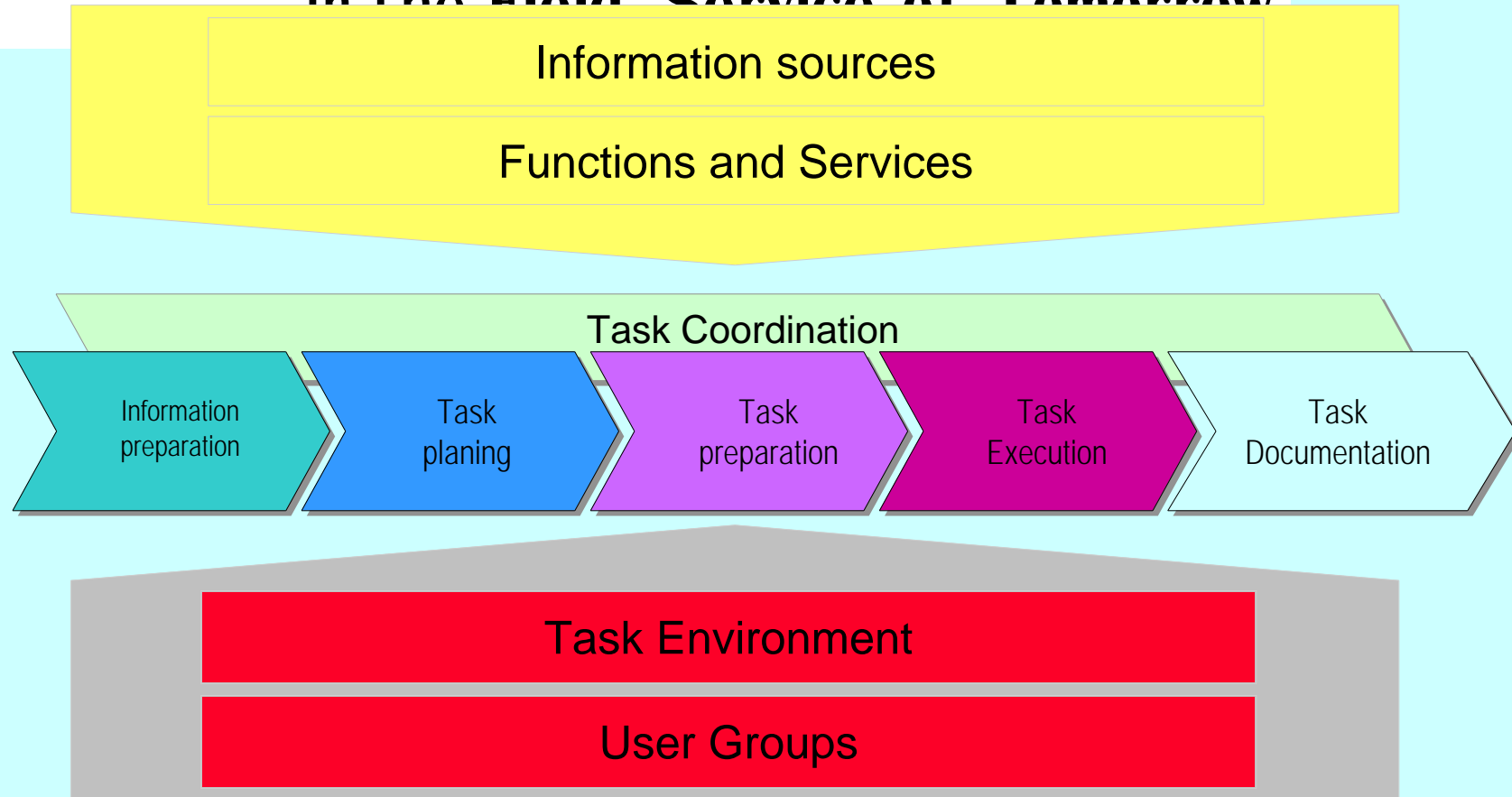
- Mobil
- Wearable / Pen-Top
- Navigation through documentation
- Communication with Remote-Expert
- wireless communication
- context dependent
- workflow driven



# Information Management

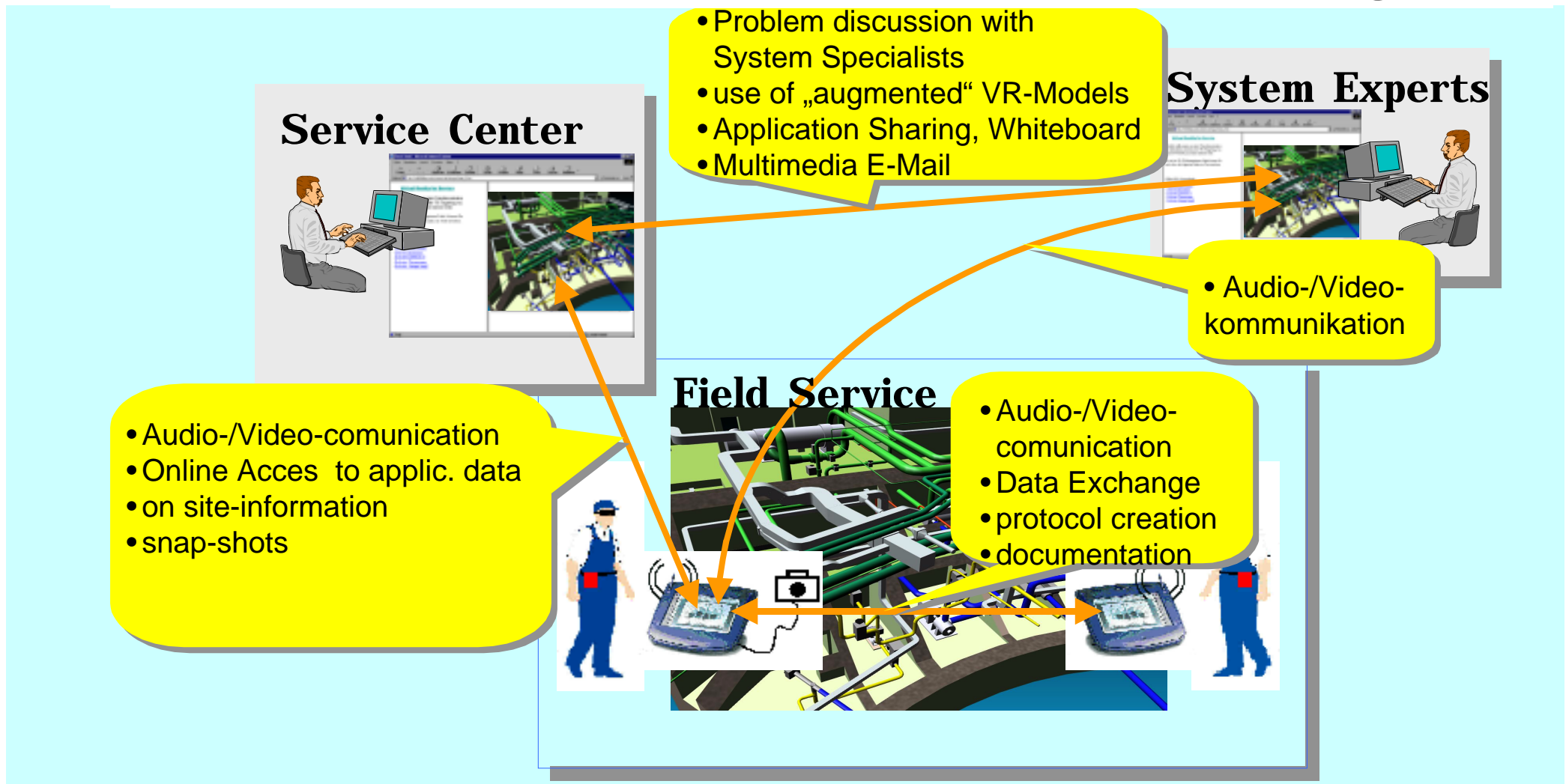
is a **key- function**

in the **Field Service of Tomorrow**



...the collaboration in virtual teams

...one of the main requirements of the Info-Management



**S**

